



# FINAL INSTRUCTIONS

Permit No.  
EN/26/O/25424

## 2026 SART CHAMPIONSHIP ROUND 3

### The Lew Job 2 Day Reliability Trial

being held on the 6th & 7th June, 2026  
at Robertstown Football Oval  
Main St, Robertstown SA 5381

Please note that spectator access is not permitted on any private property.

We ask that all attendees respect our landowners who generously allow us to use their property.

**Please read the information below before arriving at the event.**

These Final Instructions are to be read in conjunction with the 2026 Manual of Motorcycle Sport, SART Championship Regulations and the event Supplementary Regulations.

It is your responsibility to ensure your competition licence is current, free of suspension, and carries the appropriate endorsements.

**STEWARD:** Pam Groom  
**CLERK OF COURSE:** John Barton  
**RACE SECRETARY:** Ian Haylock  
**TECHNICAL OFFICER:** Ray Robertson

**TIMING:** Chris Caust  
**Trainee COC:** Isaac Southern  
**MEDICAL:** First Care

## EVENT AND RACE SCHEDULE

10:00 TO 12:00 PM  
6<sup>TH</sup> JUNE

### RIDER SIGN ON

Robertstown OVAL

12:15 PM  
6<sup>TH</sup> JUNE

### RIDERS BRIEFING

COMPULSORY

1:01 PM  
6<sup>TH</sup> JUNE

### START TIME

FIRST COMPETITOR WILL START

## RIDING ORDER

Sidecars

P - Pre 1995

L - Ladies

M - Masters

V - Veterans

D - Open 2 Stroke

F - Up to 405cc 4 Stroke

G - 406cc+ 4/ stroke

A - Expert



# WELCOME

The event will start and finish at the Robertstown Football Oval, Main St, Robertstown home of the Southern Saints Football Club. The course is approx. 75km and approx 2.5hrs per lap and will cover a variety of terrain, Saturday will be 2 laps with day and night riding, and Sunday will be 2 laps daylight riding only

## COMPETITOR CHECKLIST AND SIGN ON

All competitors are required to present a valid and current Motorcycling Australia (MA) Annual Competition Licence. Participants must log in to the MA RiderNet App (available on Apple and Android devices) to display their digital licence card during sign-on. Alternatively, a physical MA licence card will also be accepted.

### CHECKLIST

Please ensure you bring and/or have completed the following:

- Proof of registration and insurance (receipt documentation) for your machine
- Current Driver's Licence of the appropriate class
- Valid Motorcycling Australia National Licence and current Club Membership
- Self-scrutineering form (submitted online or handed in at sign-on)

Failure to produce the above documents may result in exclusion.

**All competitors must report to Documentation Check no later than 12:00pm.**

## SCRUTINEERING

All bikes are required to undergo self-scrutineering prior to the event by completing the official [self-scrutineering form](#), which will be made available online 48 hours before the event. All riders must complete this form, preferably electronically via the provided link, or alternatively by submitting a paper copy available on the [SART Website](#) at sign-on.

By signing the form, riders declare that their motorcycle complies with the Manual of Motorcycle Sport (MoMs), relevant Road Traffic Authority requirements, and applicable Australian Design Rules (ADRs). Once self-scrutineering has been verified, a scrutineering sticker will be issued and must be clearly affixed to the front number plate of the motorcycle.

Random machine examinations may be conducted at any time at the discretion of the Technical Officer. It is important to note that all machines, equipment, and protective clothing must present in a clean and serviceable condition at the start of the event, and any competitor presenting with items deemed not clean or not in suitable condition may be excluded from starting.



## RIDER'S BRIEFING

The **compulsory riders briefing** will be held as detailed in the above schedule and will include important up-to-date information relating to the event. Rider sign-on will be paused while the briefing is in progress. Please note that there will be only one Rider Briefing, and all competitors are required to attend.

## RIDING NUMBER

Stick-on numbers will be supplied to all competitors, and each machine must display the supplied 115mm x 90mm number. **No other numbers** are to be displayed on the motorcycle under any circumstances, including crossed-out numbers.

## ENVIROMATS

All competitors are required to supply and use an enviromat at both fuel stops when refuelling or using any lubricants. Enviromats will be available for purchase at sign-on if required (Cash Only)

## MEDICAL

As per the Supplementary Regulations and General Competition Rules (GCR), you cannot refuse medical treatment, and doing so will result in your exclusion from the event.

## CODE OF CONDUCT

All competitors, team members, and associates are required to adhere to the standards set forth in the Motorcycling Australia (MA) Code of Conduct. Competitors are responsible for the actions of their crew, which directly reflects on them.

Unacceptable behavior, including but not limited to abuse of officials, antisocial conduct, or public intoxication, will not be tolerated.

We uphold a ZERO TOLERANCE policy regarding abuse directed at officials and volunteers, both during the event and within the venue. Any violations will result in immediate removal and/or disciplinary action.

## RESULTS

The final results will be published on the SART Championship Series website. For Supplementary Regulations, latest news, and more information, please visit [sartchampionship.au](http://sartchampionship.au).



## SAFETY CHECK

All machines will undergo a light check after lap 2 on Saturday before bike impound in Main control. Penalties for non-working lights will apply as per supplementary regulations. Machines will require a minimum working high & Low beam, brake & taillight.

## SUNDAY WORK PERIOD

All competitors will have a 30-minute work period prior to their lap 1 Due out time on Sunday morning. Competitors must present to Main Control for check in 30 minutes prior to their due out time. Only spares, tools & equipment carried by the competitor from the start of the event may be used.

## SPECTATOR ACCESS

There will be no spectator access to section 3, controls 5 & 6 off Eagle Hawke Gate Road due to the road being used in both directions by competitors.

There will be no spectator access to Control 7 after the Fuel Dump.

It is advised that spectators do not traverse Black Peak Rd as it is narrow two-wheel track affected by washed out areas from recent rain fall.

It is advised that spectators do not traverse Dump Road from Control 11 to 12 as this road has recently undergone civil repairs for rainfall damage.

If you are a spectator at the event, please respect the landowners and use these areas provided for viewing. Programmes & course maps with the spectator area marked will be available at Main Control on the day

## CATERING

Come along, support and enjoy the local hospitality and atmosphere, full catering and licensed facilities will be available all weekend thanks to the volunteers from the Southern Saints football, Netball club. Camping for the weekend is welcomed & encouraged anywhere within the football oval grounds, toilet facilities available

## DUEL USE ROADS

Competitors, please note, there will be two-way motorcycle traffic to & from Controls 5 & 6 for 1.5km on Eagle Hawke Gate Rd.

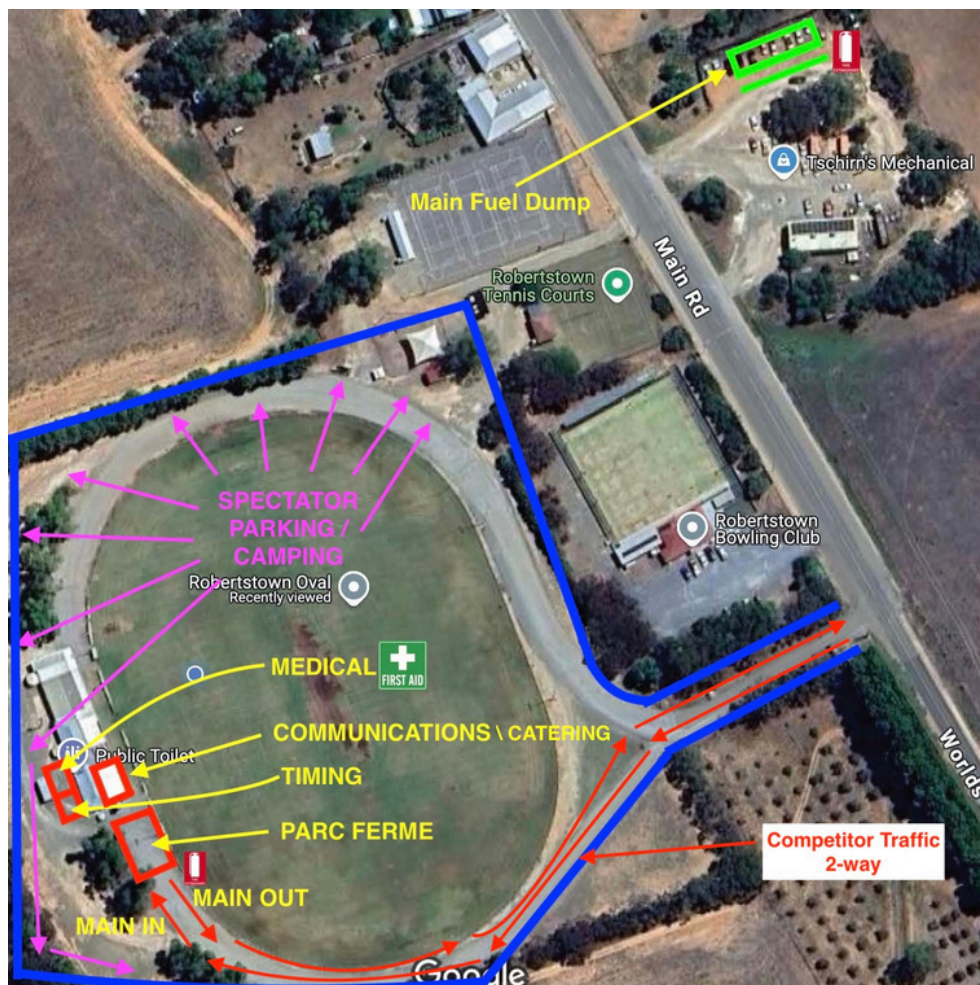
& also, from Fettke Rd along Worlds End Rd for 2km to Control 11.

Please travel with care.



# DISTANCES & TIMES

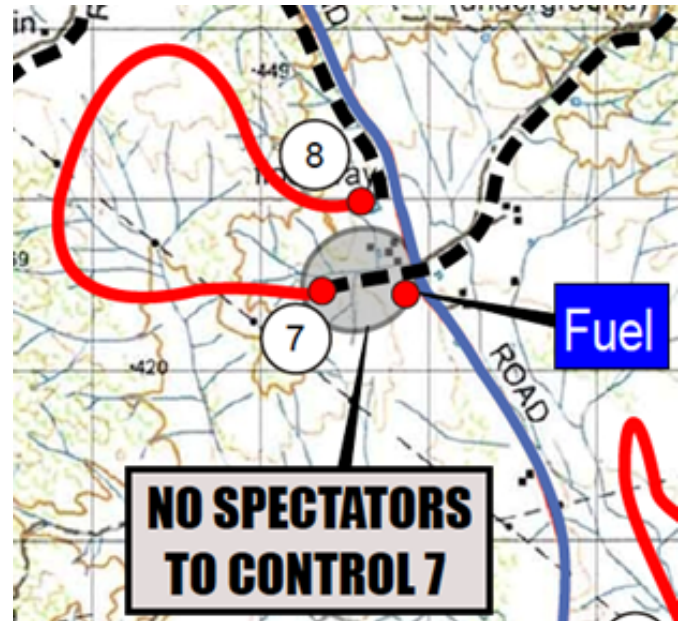
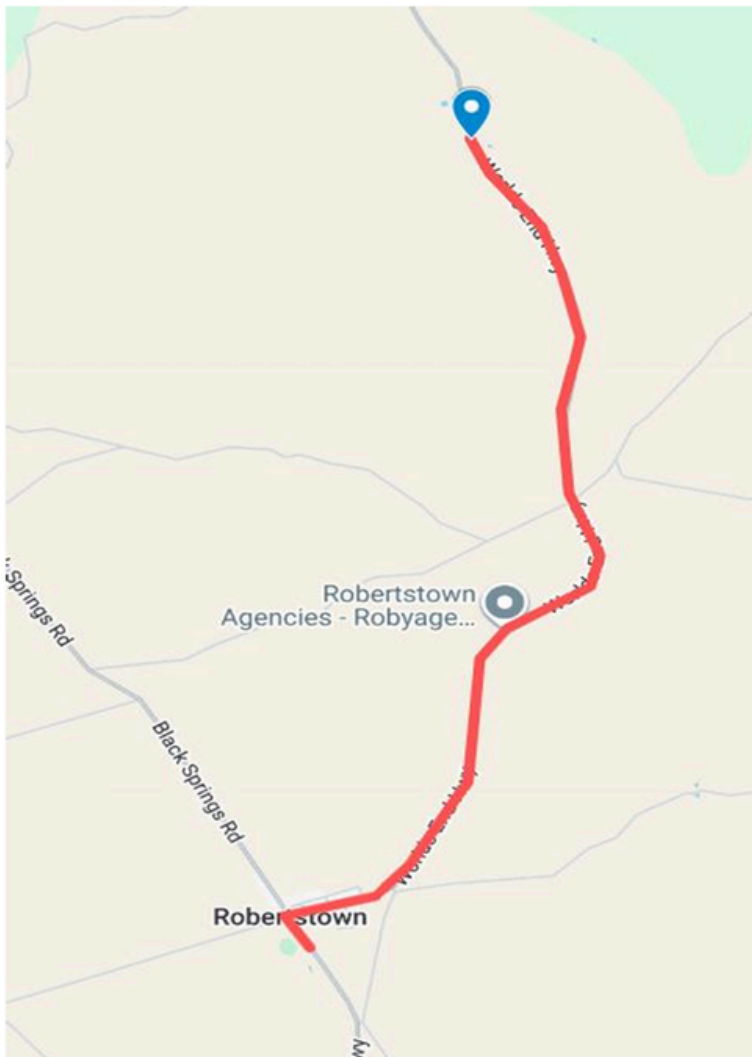
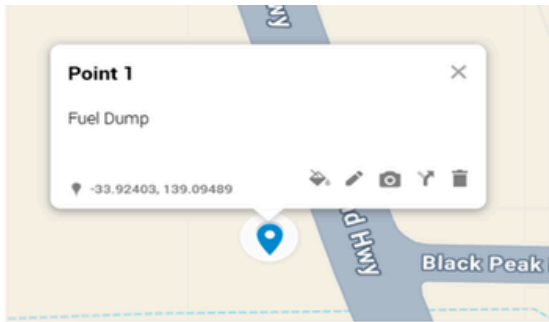
	distances & times	
	Distance	Timing
<b>MAIN to 1 -Trans</b>	8	12
<b>C1 to C2 Competition</b>	5	10
<b>Control 2 to 3 -Trans</b>	2	4
<b>C3 to C4 Competition</b>	4	8
<b>Control 4 to 5 - Trans</b>	6	10
<b>C5 to C6 Competition</b>	3	6
<b>Control 6 to 7- Trans + 15min fuel</b>	9	28
<b>C7 to C8 Competition</b>	6	12
<b>Control 8 to 9 -Trans</b>	8	12
<b>C9 to C10 Competition</b>	4	12
<b>Control 10 to 11 Trans</b>	9	13
<b>C11 to C12 Competition</b>	4	8
<b>Control 12 to Main Transport + 15min Fuel</b>	5	23
<b>Total distance</b>	<b>73</b>	<b>158</b>



# FUEL & REFUELLING

Limited Fuel will be available in Robertstown petrol station over the weekend, the town service station this will be open for fuel Saturday 8.30am – 1.00pm & Closed on Sunday there will be 2 fuel stops per lap. The intermediate fuel stop will be at approx 40 kms from main prior to control 7 (15 mins has been allocated for refuelling). The primary refuelling will be set up within an area of the petrol station in Robertstown. Refuelling is to be undertaken prior to entering the oval and Main control (15 mins for refuelling is allocated.)

Refer below for intermediate fuel stop maps / location.



## ANIMALS

No animals are permitted at the event, with the exception of registered guide dogs and assistance animals. We kindly ask that you inform your crew and supporters not to bring pets.

Individuals accompanying a registered guide dog or assistance animal must present the Race Secretary with documentation verifying that the animal is qualified, accredited, and serving its designated individual.

## PIT BIKES, E-SCOOTERS, E-BIKES and BICYCLES

The use of pit bikes, e-scooters, e-bikes, bicycles, or any non-competition machines is strictly prohibited on the premises.

Exceptions are made solely for event officials and volunteers utilising these vehicles during the event. Non-compliance will result in penalties.

## QUESTIONS and QUERIES

If you have any questions or require further clarification concerning these final instructions, please do not hesitate to contact the race secretary of the event, **Ian Haylock 0427 874 754**. They will be happy to assist with any inquiries you may have and ensure everything is in order for your participation.

Additionally, we kindly ask that you carefully review the riders' list to confirm that your nomination has been successfully processed. It is important to verify that all of your information is accurate and up to date, as any discrepancies could affect your entry or results.

Please take a moment to check and ensure everything is correct before the event begins.



**TRANSPONDERS:** New adhesive transponders will be issued for each round of the series to be attached to your machine.

**PLEASE REMOVE PREVIOUSLY FITTED TRANSPONDERS FROM YOUR MACHINE AND ANY REMAINING GLUE RESIDUE FOR THE BEST POSSIBLE ADHESION**

**\*Tip For Removing Glue:** Remaining glue residue can be easily removed using a microfibre cloth and "Windex" or similar glass cleaner; Spray the glass cleaner on the glue affected area and on a portion of the microfibre cloth, use the wet portion of the cloth to agitate the area until it becomes jelly and wipe off with the cloth.

You will be issued an envelope containing 2 new adhesive transponders at sign on. One is to be placed at the front and the other at the rear of your machine.

**For the best possible detection of your riding number**, it is important you adhere the Transponders in the correct location and orientation. **The best detection can be achieved by adhering the transponder to a clean area on your machine where there are no graphics. Chrome graphics will render the transponder non detectable**, please ask for assistance before placing the transponder on any heavy graphics. (Refer to the diagrams in this document)

**SECTION START:** Your scheduled competitive section start time is recorded when you leave the Control. Your actual racing start time is taken once you have left the control and passed the electronic timer located at the "**START**" sign.

**SECTION FINISH:** Your competitive section time is complete once you have passed the second electronic timer located at the "**END**" sign.

After passing the "END" sign you must slow your machine to a safe speed before entering the end of section Control.

**WARNING:** You are still required to **STOP at the end Control** and have your number recorded. Failing to stop at a Control incurs a **penalty of 600 points**. Refer to RT Supplementary Rules "Section Timing".

**NOTE:** There is no need to take off from a start control in an aggressive manner, or enter a finish Control inappropriately.

## LIVE TIMING

Provisional Live results will be published on [my.raceresult.com](http://my.raceresult.com).

To access live timing...

- Go to [sartchampionship.au](http://sartchampionship.au) and follow the "LIVE TIMING" links.
- Scan the QR code in the program or at Main Control.
- Live timing viewing will be available on screen at Main Control.

Final results published on the SART Championship Series website.

For Supp Regs, Rule Book, latest news & more, please visit [sartchampionship.au](http://sartchampionship.au)

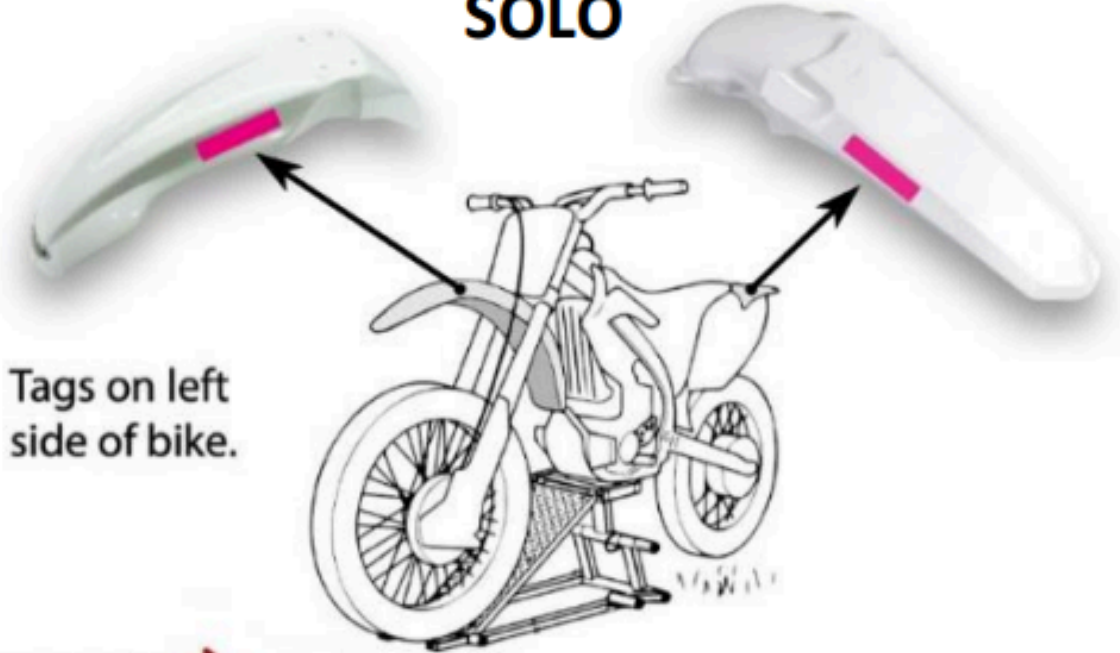
*\*From the Timing Team\**





*\*Please leave areas clear for affixing*

## SOLO

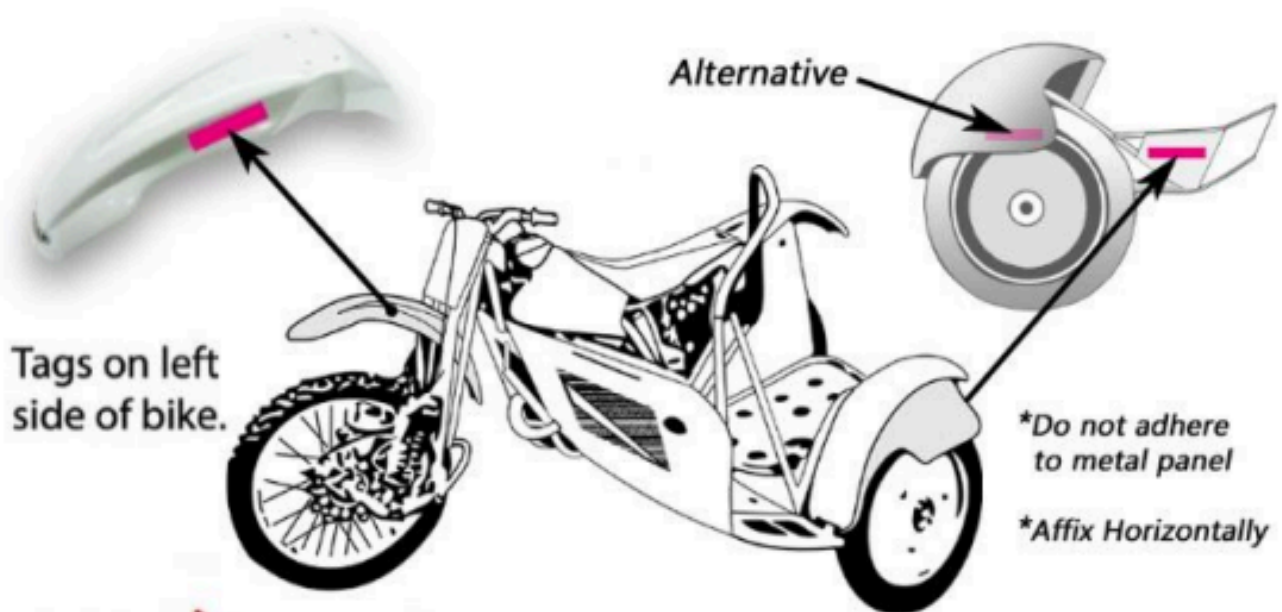


Tags on left side of bike.

POWERED BY  
**RACE RESULT**

*Sticky tag placement*

## SIDECAR



Tags on left side of bike.

*\*Do not adhere to metal panel*

*\*Affix Horizontally*

POWERED BY  
**RACE RESULT**

*Sticky tag placement*

